



# The Next Chapter

## Building on Solid Foundations



Nationwide Delivery • 16,000+ Product Lines • Extensive Stockholding • Expert Team



## Contents

Welcome to Green-tech's New Managing Director.....	4
Our People .....	6
John Chambers Wildflower Seed.....	8
Green-tree .....	9
Green-tech Specifier.....	10
Terram Direct .....	12
Green-tech Trade Centre.....	13
RainBird.....	14
Tubex Nature Shelter .....	16
Tree Shelter Collection & Recycling Programme .....	17
SoluForm MSE Soil Filled Bagwork.....	18
PlantBox.....	19
Innovations.....	20
Testimonials.....	22

# Green-tech: The Next Chapter Building on Solid Foundations

**#WorkingTogether** was the motto for Green-tech throughout 2020 and 2021, uniting suppliers, manufacturers and customers to ensure the landscape and forestry industries were kept mobilised through the most challenging of times. A year like no other for the Green-tech team, we emerged from the first phases of the pandemic stronger, more focused and ready to go again.

After 27 years under the entrepreneurial guidance of Richard and Rachel Kay, the Green-tech brand has gone from strength to strength and in March 2021 Green-tech was acquired by Origin Enterprises. The Origin board were keen to expand their capabilities from

agriculture and amenity into the landscape sector and identified Green-tech as a key stakeholder in the industry. They were impressed with Green-tech's ability to diversify across many areas whilst retaining expertise, whether supplying tree protection to forests or specifying a wildflower meadow, the Green-tech team has the in-house knowledge to reassure.

Origin Enterprises is keen to retain the Green-tech can-do attitude and approach, whilst investing and growing the business to meet the industry's future expectations. Green-tech is a business where the people are central to its success, where every team member works hard and plays hard and above-all is customer focused. The team at Green-tech remain as dedicated and driven as ever. They are excited to work as part of Origin and build on the solid foundations inherited from Richard and Rachel to take the business into the next chapter.





## Welcome to Green-tech's New Managing Director

We are delighted to introduce you to Kris Nellist who has taken over the running of Green-tech from former owner and Managing Director Rachel Kay.

Green-tech was originally founded in 1994 by Richard and Rachel Kay and was acquired by Agri-services group Origin Enterprises when they decided to sell in 2021.

Kris initially joined Green-tech as the Interim Financial Director and worked alongside the couple and the management team to ensure a smooth transition and handover. The time spent in this role has provided him with great insight into the running of the business and provided the opportunity to get to grips with the market, the opportunities and challenges we face.

Kris has a wealth of experience working for organisations of all sizes and ownership structures. He has over twenty years' finance and operational experience managing teams across several market sectors that range from retail to logistics and rail. Kris is a commercially focused leader and has a long history of building effective teams, developing and implementing business plans and managing change.

He has stepped seamlessly into the shoes of Richard and Rachel who set up and ran the company for more than 25 years. He appreciates the 'personality' of Green-tech and the fun and lively team culture that is the essence of the organisation and intends to ensure this remains.

New to the industry, Kris is extremely excited about the opportunity this presents. He has started to meet our industry partners, suppliers and customers and his fresh eyes and passion are welcomed by all at Green-tech. He is keen to get out there, roll up his sleeves and start introducing himself to you all.

## Over the last 18 month Green-tech has...



...led the way with branded face coverings



...been named in TOP 100 in Digital Enterprise Awards



...celebrated Josh Forster becoming a 30 Under 30 winner

# An Interview with Kris

## How are you finding Green-tech so far?

It's a company with a large heart. I've been welcomed with open arms and I'm finding my feet quite quickly. It's been a steep learning curve, but I've been working closely with Origin and with Richard, Rachel and the management team, to ensure consistency and a smooth transition for everyone. Green-tech has a strong history and is a market leader in its field and I'm excited about the opportunities that I can already see.

“...we work in a friendly and forward-thinking industry, so it's an exciting time for me to get involved.”

## How do you feel about taking over from Richard and Rachel?

Incredibly proud, I'm delighted to be entrusted with taking the reins of the business. We have an excellent business model and a fantastic hard-working team, and from what I've witnessed, we work in a friendly and forward-thinking industry, so it's an exciting time for me to get involved. The industry is booming and of course we are now part of the Origin Enterprises group with all the opportunities that brings. The future looks incredibly encouraging.

## What are your future plans for Green-tech?

More of the same and then some more! The essence and the personality of the business will remain the same but of course I have some exciting ideas for the future. Our commitment to our customers and suppliers will remain unchanged, as will our support for the industry in general.

“We have a fantastic team who have a mass of expertise and are incredibly knowledgeable.”

I'm aware that Green-tech is considered a friendly, reliable, and flexible company to work with and for, and I will ensure this stays the same. We have a fantastic team who have a mass of expertise and are incredibly knowledgeable. I'm looking forward to learning from them, and I'm confident that alongside Origin, we will achieve great things and continue to grow the business and explore new markets.

## How will your background help you in your new role at Green-tech?

Recently I was working as a finance director at a logistics firm, and I gained a good understanding and insight into the supply chain problems the global economy is presently experiencing. Prior to this, I worked in executive roles for two large rail operators,

however a large part of my working life was spent progressing through the ranks within the world's largest luxury goods group.

This taught me the importance of powerful brand messaging and storytelling, but most importantly that second-to-none product knowledge and excellent end-to-end customer experience is key to running a successful organisation. Albeit my background is in these different sectors, the skills and experience I have gleaned along the way are transferrable and will all be hugely beneficial in helping me run Green-tech.

“...second-to-none product knowledge and excellent end-to-end customer experience is key...”

## Tell us a little bit about yourself – how do you like to spend your free time?

A keen sportsman in my youth, I still pull on a pair of boots when I can, but I mostly relive my football and table tennis days through my children. We have two very naughty spaniels, so my wife and I spend a lot of time walking or should I say chasing after them! Did I mention, I'm lead singer in a rock & roll band too?!

## And some trivia; give us a random fact about yourself?

I appeared on Escape to the Country when we relocated to Yorkshire a few years ago. I'm not telling you which episode though!



...won the ProLandscape Supplier and Service Provider Award



...helped lots of charities including Open Country



...retained our ISO accreditation

# Our People

Green-tech has always been committed to the future generation and helping its employees develop their skillsets to become the best version of themselves possible. The company's long term ethos is bringing in people and giving them the tools and training to help them flourish in their respective roles. This commitment to learning and development is what has attracted some of the brightest talents in the landscaping industry to come and ply their trade at Green-tech.



## Kate Farrer

Marketing Executive Kate Farrer is a shining example of this commitment, starting at Green-tech as a Marketing Apprentice in 2017 and working her way through the ranks to her current position. Carrying out tasks that would have previously been outsourced to an external design agency, Kate has flourished in her role and has gone from strength to strength with the support of the company.



Kate has recently started a Digital Marketing Degree at Leeds Trinity University to help hone her skills further and continue her development. Over the past few years, through various training courses and experiences, Kate has become an integral part of the marketing department at Green-tech and continues to repay the company's faith and commitment in her abilities.

*"It is fantastic to have an employer who is committed to helping you achieve your goals..."*

Kate shared her thoughts on her time at Green-tech, saying, "Throughout my time at Green-tech I have always been supported by my colleagues and the management team, which has helped me make the most of the opportunities I've been given here. It is fantastic to have an employer who is committed to helping you achieve your goals and supporting you along the way, it's definitely one of the best things about working here."

## Jordan Webster

Becoming Green-tech's youngest ever salesperson to reach £1 million turnover in a single financial year early in his career, Jordan has cemented himself as a key member of the sales team. Jordan joined the company as a Technical Sales Advisor in 2013 with a small database, and through hard work and support from the management team, he has grown his database steadily over the last eight years to become one of our Key Account Managers. Green-tech has supported and nurtured Jordan throughout his career, helping him develop over the years to become the confident and assured person he is today.



Thanks to his hard work and Green-tech's investment in him, Jordan has been recognised for his achievements by winning an illustrious 30 Under 30 Award, presented to him by the team at Pro Landscaper in 2018. Making the most of the support and training provided to him by Green-tech, Jordan has grown to become a popular and well-respected figure in the landscaping industry, and he is always looking to develop further in his role here.

**"...the Management Team at Green-tech have invested in me and given me the opportunity to flourish"**

Discussing his journey and the support given to him, Jordan had this to say; "Having worked in customer service roles in previous jobs I started work at Green-tech as an enthusiastic 20-year-old. Through hard work I've progressed up the sales ladder to become a Key Account Manager. I've been very fortunate that the Management Team at Green-tech have invested in me and given me the opportunity to flourish."

### **Sarah Whitley**

Starting at Green-tech in 2016, Sarah rose through the ranks and is now the company's Buyer, dealing with the suppliers on a daily basis to secure the best prices and negotiate delivery dates. Sarah is a key part of the Green-tech team, helping the sales team supply their customers with the best quality products at the best prices, in a timely manner.



Alongside her full-time role, Sarah is also undertaking a Degree Apprenticeship, studying Professional Practice in Supply Chain Leadership. The Degree Apprenticeship has been organised and funded by Green-tech, further showing the company's commitment to meeting staffs needs and aiding their personal and professional development. Thanks to her positive attitude and mindset, Sarah has been rewarded with multiple promotions during her time here.

Sarah had this to say about her studies and the company's approach to her needs, "Throughout my employment, I have always made it clear that I've wanted to progress professionally, and Green-tech has always been receptive to that. During the time that I've worked here, I've been promoted three times, each time gaining more responsibility."

### **Richard Gill**

Richard Gill is Green-tech's Sales Director, a position he earned through his own hard work mixed with Green-tech's commitment to his development. Starting at Green-tech in a Junior sales position in 2003, Richard was new to the landscaping industry but that didn't put Green-tech off.



Recognising a talent within, the company helped Richard develop his skills whilst he worked hard to continuously grow in his role, going from strength to strength and emerging as a shining light in the sales team. Fast forward 18 years and Richard is now in charge of the whole sales floor and a regular spokesperson for Green-tech. He is a key figure at trade shows and other company events, building a solid reputation for himself in the industry as a whole. Green-tech helped build the framework for Richard's success, but ultimately, he seized the initiative and took opportunities as they came to grow and progress through the ranks at the company, establishing himself as one of the most prominent figures in the business.

**"Our customers are also amazing ... which makes my job much more enjoyable..."**

Speaking on his development and the support offered to him by Green-tech along the way, Richard stated, "I started at Green-tech in a Junior sales role, it was incredibly daunting as a 20 year old, working in an industry I knew very little about. The Green-tech team made me feel comfortable from day one and that only motivated me more to succeed in my role! The Green-tech customer base is a genuine, open and honest bunch of people to deal with and I have made some great friends over the years. Having great customers and colleagues is definitely one of the main reasons I have enjoyed the last 18 years at Green-tech."

### **Laura Darlow**

Joining Green-tech in 2015 as a Despatch Assistant, Laura has worked hard to earn multiple promotions, currently holding the title of Production & Logistics Team Leader. After gaining a Diploma in Horticulture at Askham Bryan College, Laura joined Green-tech eager to learn and work in a fast-paced environment.



The company rewarded Laura's grit and determination by promoting her initially to a Logistics Co-Ordinator and then to her current title. Green-tech has always believed in rewarding hard work and Laura's career progression is proof of that. Coming to the company fresh out of college, Laura has had to grow and develop a lot in her time here, but she has taken that extra responsibility in her stride and is now one of the key members of our Operations team.

Speaking of her role and Green-tech's support Laura said, "I really feel I have a career at Green-tech rather than just a job. I have already been promoted twice and there are so many more opportunities open to me. It's a really friendly industry; whether you have qualifications or not; with hard work and determination there is a role for everyone."

### **Josh Hebden**

Josh Hebden joined the Green-tech yard team at the beginning of 2019, and in just over two years has taken on a lot more responsibility, now acting as the company's Warehouse Team Leader and Goods In Manager.



Josh joined Green-tech with no previous experience of the landscaping industry but has taken on the new challenges he faces on a daily basis in a robust and head-on manner and has risen through the ranks at the company rapidly. Green-tech has supported Josh's development by sending him on training courses relevant to his role and handing him more responsibility when he was ready to take it on. Thanks to his willingness to learn and push himself, Josh has been given many development opportunities which he has taken advantage of fully.

**"If you show that you're willing to learn and work hard, Green-tech rewards that and helps you take the next step..."**

On his time at Green-tech and how the company has helped him, Josh said, "I love working here for many reasons, but the main one is the trust and faith the company shows in your abilities. If you show that you're willing to learn and work hard, Green-tech rewards that and helps you take the next step in your career."



**Project:** Ashtree Gardens  
**Location:** Ashby-de-la-Zouch, Leicestershire  
**Client:** Bellway Homes  
**Landscape Contractor:** PGE Landscaping Ltd  
**Products Supplied:** 1,000m<sup>2</sup> John Chambers Wildflower Matting

## John Chambers Wildflower Seed

John Chambers was established more than 40 years ago as a supplier of Native British wildflower seed. Green-tech purchased the business in 2013 and rebranded it as John Chambers Wildflower Seed, updating the business while retaining the founder's traditional values.

John Chambers Wildflower Seed is a respected supplier of rural and urban seed mixes. The team supply native British wildflower seed and mixes for a wide range of projects across the UK and is considered one of the leading authorities on native wildflower seed. Their seed is sourced from long-established growers that are stringent in their collection processes.

The John Chambers wildflower seed is cleaned by hand to achieve the highest quality standards. Seed cleaners only dispatch the best seed to ensure optimum growth and success regardless of the climate or soil quality.

With a focus on biodiversity and sustainability, the John Chambers team are passionate about their role and work closely with landscapers, landscape architects, farmers

and conservationists who appreciate the beauty and benefits of wildflowers. They regularly deliver CPD Seminars and speak about wildflowers at industry events.

Wildflower spaces in both rural and urban environments are increasing as their value and importance with biodiversity and in helping to restore our fragile ecosystems continues to grow. Our team work with landscape architects and ecologists across the UK to create bespoke wildflower mixes that meet specific criteria. The team takes time to consider biodiversity, location, flowering periods and project aspirations before creating a suitable mix.

The range includes John Chambers wildflower matting, wildflower bulbs, as well as wildlife and insect habitats.



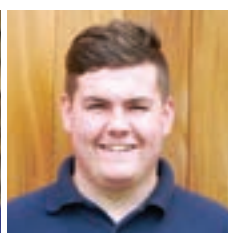
Stuart Ball



Georgia Gilbert



Declan Blacker-Meek



Jack Isaac





## Green-tree

Green-tree is a well-respected brand and a leading provider of soils and growing media. Established nearly two decades ago, Green-tree products are manufactured from natural by-products of the recycling industry.

Green-tree's range of soils and substrates are manufactured to meet British Standards. They are manufactured and distributed from 25 sites across the UK to offer full nationwide coverage, ten of these belong to Freeland Horticulture with whom Green-tree has a partnership to distribute its award-winning topsoil.

The Green-tree brand of topsoil and substrates has been developed to meet the needs of the market and are used and regularly specified on many high-profile projects, from public parks and sports pitches to city centre rooftops and out of town shopping complexes.

The range of Green-tree soils is extensive and includes topsoil, subsoil, roof garden substrate, amenity tree soil, ArborRaft soil which is used in urban tree planting projects, and specialist substrates such as a Clean Cover System for contaminated or brown-filled land and a Rain Garden Filter Medium for rain garden or grey water management systems.

The Green-tree team are well respected within the industry for their knowledge and expertise. They regularly present at industry events and debates and have several CPD Seminars that they deliver across the UK, physically or virtually to Architects, Councils and other specifiers.

Green-tree clients include everything from housing and commercial developments to domestic gardens. Our team will provide professional advice and use their expert knowledge to engineer a prescription mix to meet specific requirements. The brand is recognised for the quality and consistency of its year-round supply of topsoil.

**Project:** Leeds Skelton Lake Services

**Location:** Junction 45 of the M1, Leeds, West Yorkshire

**Client:** Extra MSA Group

**Landscape Contractor:** Brambledown Landscape Services

**Products Supplied:** 200 tonnes of Green-tree Topsoil, 150 tonnes of compost, 300m<sup>3</sup> of bark mulch, 7,000 Tubex ShrubShelters and supporting tree planting sundries



Mark Wood



Roxanne Stoakes



Sam Jackson



Josh Rimmer



**Project:** Bristo Square, McEwan Hall

**Location:** Edinburgh

**Client:** The University of Edinburgh

**Landscape Architects:** Ironside Farrar Ltd

**Landscape Contractor:** M W Groundworks

**Products Supplied:** ArborRaft Tree Planting System, 200 tonnes of ArborRaft Soil, Tree Anchor Kits, gtRootBarrier, Mona Irrigation and Fortress Tree Grilles

## Green-tech Specifier

Focusing on technical specifications and finding landscape solutions for landscape architects, contractors and garden designers, Green-tech Specifier is the specification team within Green-tech.

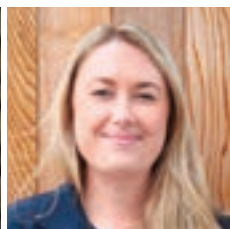
The Green-tech Specifier team work closely with landscape architects and contractors and find the best solutions for their landscaping projects. They provide technical assistance at the specification, estimating and drawing stages of their projects; they support with pricing, a consideration critical on most landscape projects and they provide on-site installation advice and training.

The hand-picked team has the product knowledge and technical expertise to offer suggestions and recommendations for designs and the know-how to piece together an installation. The team works with specifiers from the tendering process through to project completion. Green-tech Specifier is also involved in product development, and assessments before any Green-tech products are taken to market.

As an educational resource, Green-tech Specifier offers a CAD service for architects who need assistance with drawings. The team holds a library of drawings that can simply be inserted into the planned scheme. The team offer a wide variety of CPD seminars which cover urban tree planting, the guide to good soils, wildflowers, tree and plant irrigation and ground reinforcement are also on offer. They are delivered to practices throughout the UK, either physically or virtually.



Richard Wexham



Alice Birch



Alasdair Innes



Emily Murray

# New Release: Specification Brochure Pack

This pack contains a selection of our most commonly requested Specification brochures to enhance and improve your landscaping projects. You will receive:

- // Green Roof Substrates brochure
- // Soils and Growing Media brochure
- // Wildflower Seed brochure
- // Urban Tree Planting Solutions brochure
- // Tree and Plant Irrigation brochure

**Request your printed brochure pack today or download digital copies from [gtspecifier.co.uk/brochures](http://gtspecifier.co.uk/brochures)**

**Helping to create beautiful landscapes**

// specifier.



**Technical advice / CAD Drawings / Specifications / Product Supply**

Tailored landscape solutions  
for architects and garden designers

T: 01423 332 114  
[info@gtspecifier.co.uk](mailto:info@gtspecifier.co.uk)  
[www.gtspecifier.co.uk](http://www.gtspecifier.co.uk)



**Project:** Primrose Gardens Car Park

**Location:** Chorley, Lancashire

**Client:** Chorley Council

**Landscape Contractor:** Wade Group

**Products Supplied:** 170m<sup>2</sup> of TruckPave® 80 and Tensar TX160 Geogrid

## Terram Direct

Terram Direct is the UK's largest supplier of Terram geosynthetic products, helping people protect the ground in their projects effectively.

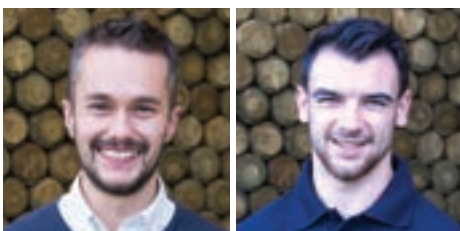
Supplying to a wide range of industries including landscaping, construction and grounds maintenance, Terram Direct has established itself as one of the market leaders when it comes to geosynthetic supplies.

Terram is one of the most trusted geosynthetic brands in the landscaping industry and is widely used in a multitude of projects such as overflow car parks, large lawns and even domestic driveways. Terram Direct brings you the products from this high-quality supplier alongside expert advice and guidance.

Geosynthetics help protect the condition of grassed areas that are expecting a large footfall or increased vehicular use such as festival fields. The Terram range prevents the grass from being ruined by all the extra traffic and is simple and easy to install.

Terram Direct supplies popular products from the range such as BodPave® 40, TurfProtecta® and Terram 1000. These products can be used for large scale projects as well as domestic ones to ensure your grassed areas are given the care they need and deserve.

Our Terram Direct team have an extensive knowledge on the Terram range of products and can help you pick the correct product for your particular project, alongside providing competitive prices too.



Dean Jackson

Sam Davies



## Green-tech Trade Centre

The Green-tech Trade Centre was established in 2018 and provides landscapers with all they need to complete their projects to the best standard possible. Ranging from tree ties to rock salt, the Green-tech Trade Centre can meet the customer's needs no matter what they are.

Due to growing demands from customers for a collection service to be available for emergency supplies or short-term needs, the Green-tech Trade Centre was founded. It now serves a wide range of customers from all over the country, helping them complete their projects in an efficient and effective manner.

Manned by experienced and helpful sales staff, the Green-tech Trade Centre ensures that its customers leave happy and their requirements are sufficiently catered for. A wide range of landscaping supplies are available and can be ordered and collected on the same day, giving the customers peace of mind knowing that if they hit a snag in their project, it can be quickly remedied by the Green-tech Trade Centre team.

Running regular promotions and offering competitive prices for all customers, the Green-tech Trade Centre has become a popular source for landscaping supplies in a wide variety of customers, ranging from one-man bands to larger scale companies.

The Green-tech Trade Centre can cater for any project size big or small thanks to there being such a vast array of products available that can be used in a variety of applications. Our team are here to help you enhance your landscaping projects all in an efficient and stress-free manner.

**Project:** Stourton Park & Ride

**Location:** Leeds, West Yorkshire

**Client:** Leeds City Council

**Landscape Architects:** Mott Macdonald

**Main Contractor:** BAM Nuttall

**Products Supplied:** Soil Improver, Bark, gtRootBarrier, Tree Guards, Stakes, Canes, Ties, Irrigation and Anchors



Liam Corbett



Ryan Allinson



## New Product



# RainBird

The latest addition to Green-tech's portfolio is the RainBird range of irrigation products. The world leader in irrigation automation, RainBird was founded in 1933 and is today installed in over 130 countries.

RainBird is renowned for its professional quality irrigation solutions, installed in farms, golf courses, sports fields, commercial developments and residential homes all over the UK. Working in partnership with RainBird, the Green-tech team hopes to educate, support and supply irrigation solutions to its landscape customers.

### RainBird Irrigation Training Academy

In partnership with RainBird, Green-tech will be offering installation training programmes for the RainBird system. The training will take the form of a one or two day course, covering the essential considerations when specifying and installing an irrigation system.



- Basics of hydraulics,
- Selection and installation of sprinklers,
- Sizing and types of pipelines, network design,
- Calculation of flow rates and watering times,
- Complete realisation of a study

### The product range includes:

- Landscape Driplines
- Pop up Sprinkler Spray Heads
- Pop Up Sprinkler Spray Bodies

### Specification and drawing service available

We understand that no two jobs are the same, therefore we offer the support and expertise of irrigation experts that have worked with the Rain Bird system for many years. However complex your job, there will be a Rain Bird solution to fit the client's requirements.

For more information on the Rain Bird training programmes, please get in touch with your Green-tech Account Manager [sales@green-tech.co.uk](mailto:sales@green-tech.co.uk)

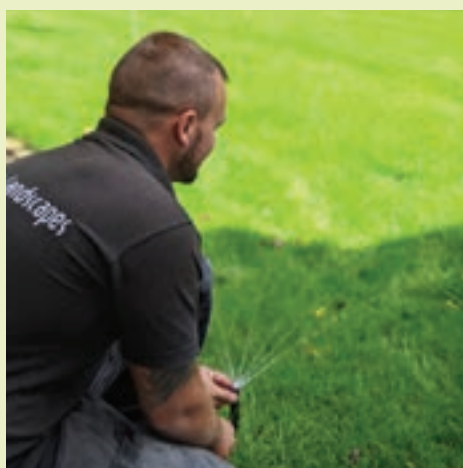




## Case Study

# Automatic irrigation solution installed in residential garden

When homeowner Ian France decided to landscape his garden, he turned to experienced local designer and contractor Grepne Landscapes.



One of Ian's main concerns was how to keep his plants and shrubs healthy as they were a significant investment. He was interested in having a fully automated irrigation system installed to ensure they received the correct amount of water, whatever the weather.

The garden featured a large central lawn, with flower beds to either side, which were stocked with perennials, shrubs and climbing border plants. A wildflower garden, an array of planters and a decked area with a pergola completed the look. An existing 60-foot flowering cherry tree was also incorporated into the landscaping scheme, but it was noted that its root system would absorb a huge amount of water from the lawn and the adjacent areas which needed to be addressed when selecting an appropriate irrigation system.

It was critical to accommodate the different planted zones which included the lawn and wildflower area where the flowering cherry's root system has a major impact. Careful calculation of the precipitation rates and throw distance of sprinklers was required to ensure complete and uniform coverage.

Due to its flexible scheduling capabilities and ease of set-up and use, the Rain Bird ESP-RZXe model was selected as the irrigation controller. The system features multiple irrigation zones, each with its own solenoid valve which can be scheduled independently to provide irrigation for the separate areas of the garden and accommodate their differing watering requirements.

Discreet Rain Bird R-Van adjustable rotary nozzles with variable arc were selected in combination with 1800 Series Pop-Up sprinklers of different body heights to give complete coverage. An XFD Surface Dripline was installed around the mulched borders and the climbing shrubs and planters to provide irrigation exactly where it was needed. A pressure regulator was included to ensure the Dripline is protected from fluctuations in water pressure.

Irrigation was programmed for early each morning to prevent any evaporation during the day. With the Rain Bird LNK WiFi communication module installed, the ESP-RZXe links to a rain sensor and the Rain Bird App on Ian's phone, which prevents unnecessary irrigation. The App enables the user to override preset programmes to make weather-based adjustments and stop or start irrigation remotely.

*"the assistance I received in specifying the correct Rain Bird products... was first class."*

Tom Grepne's from Grepne Landscapes comments, "The technology might initially seem daunting but the assistance I received in specifying the correct Rain Bird products and setting up the irrigation programming for my customer, was first class. Ian's zoning requirements were complex but the system made it straight-forward. I would not hesitate in recommending automated irrigation to my other customers. The benefits are immense in terms of water conservation – there is no wastage – and it protects the investment in their new landscape."





## New Product

# Tubex Nature Shelter

A bio-based polymer tree shelter designed to be biodegradable and non-toxic for applications where access for collection and recycling is not practical. This shelter helps protect saplings, young and established trees from wildlife, spraying and damage from the elements.



### Technical Information

- **Height:** 0.6m, 1.2m
- **Diameter:** 73 – 105mm
- **Colour:** Natural with no additives, red/brown also available
- **Material:** Bio-based blend
- **Life Expectancy:** 3 – 5 years, depending on climatic conditions
- **Light Transmission:** increased by over 14% vs Tubex Standard externally tested by Cranage Testing using Light 435 lux

### The next generation of biodegradable tree shelters

The Tubex Nature Shelter is currently under testing for ISO:17556 Soil Biodegradability and OECD 208 for plant ecotoxicity – no acute toxicity detected. All components of the Tubex Nature Shelter have been tested and certified to biodegrade, passing the norm 14995:2006.

These shelters are currently in trial across the UK. They are a high quality, fit for purpose tree planting solution which will start to degrade over time and breakdown into water and CO<sub>2</sub> by a process of microbiology.

### Benefits

- **Twin walled construction:** Minimises the product's weight while maximising strength
- **Superior features:** Tubex LaserLine to allow the tree to break free and a flared rim to minimise stem abrasion
- **Increased light transmission:** The shelter's excellent light transmission properties are over 14% higher than those of standard tree shelters
- **Planet-friendly:** A bio-based, biodegradable tree planting solution
- **Mulched or buried:** At the end of its life cycle, the shelter can be mulched or buried to increase the bio-degradation process
- **Derived from nature:** All materials within this product are wholly or partly derived from biomass, such as plants, trees or animals





Working in partnership

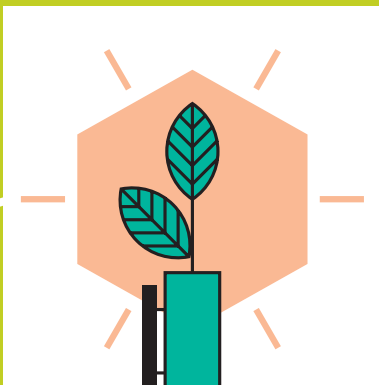


**COLLECTION & RECYCLING PROGRAMME**

# Tree Shelter Collection & Recycling Programme

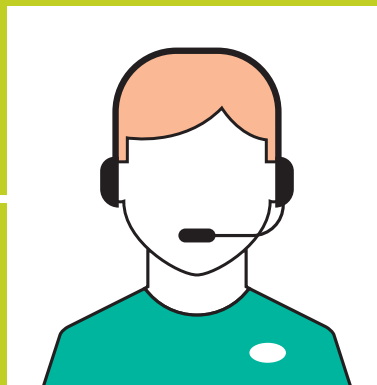
A cost-effective tree shelter recycling solution ensuring that responsible disposal is within reach for everyone.

We've received many requests over the years for a viable and cost-effective tree shelter recycling solution that will benefit the client, contractor and the environment. Working in partnership with the UK's leading tree shelter manufacturer Tubex, we now have a collection programme available that can be incorporated into any tree planting scheme. Plastic waste affects our everyday life and our new initiative closes the loop to ensure responsible disposal of tree shelters is within reach for everyone.



## Step 1: Plant Tree

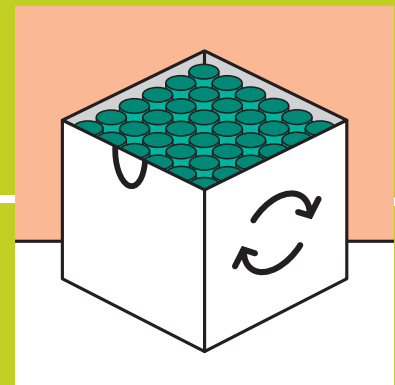
Plant trees using Tubex tree shelters.



## Step 2: Remove Shelter

When the tree is ready, remove the shelter and place an order for bulk recycling sacks from your Green-tech Technical Sales Advisor.

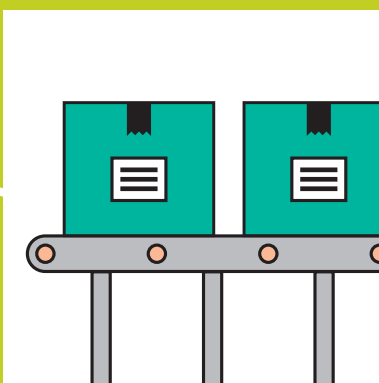
**Hint:** Roughly 350 to 400 Tubex Standard Shelters (1.2m) will fill a bulk recycling sack.



## Step 3: Fill Bulk Bag

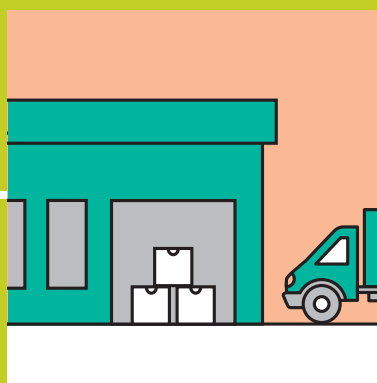
Fill the bulk bag with the removed Tubex tree shelters.

**Hint:** Ask your Green-tech Technical Sales Advisor for guidance on the most efficient filling method.



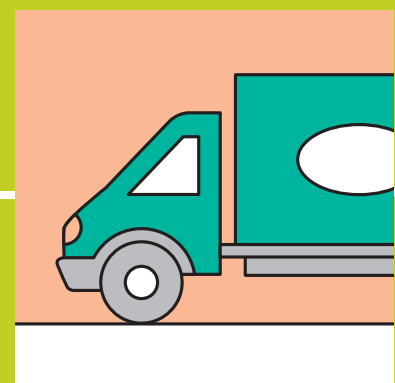
## Step 6: Second-Life

The recycled PP pellets will then have a 'second-life' incorporated into other Berry products.



## Step 5: Recycling

Once at the recycling plant, they are washed and recycled into PP pellets.



## Step 4: Collected By Tubex

The used Tubex shelters will be collected and transported to the recycling plant.



## New Product



### Technical Information

- **Filled bag weight:** 20kg
- **Bag dimensions:** 300mm x 540mm x 140mm (d x w x h)
- **Geotextile fabric:** UV resistant, needle punched non-woven polyester, consisting of randomly orientated synthetic staple fibres
- **Colour:** Dark green
- **Filled bag contents:** BS 3882:2015 compliant sand, nutrient-rich topsoil
- **Fixings:** A singular spikey shear key or two pins/pegs are included with each bag

# SoluForm MSE Soil Filled Bagwork

Soil filled, mechanically stabilised earth (MSE) geotextile bags used for the construction of earthworks such as riverbanks, slopes and walls.

### How does it work?

SoluForm MSE Bagwork is a cost-effective, environmentally safe and ecologically-beneficial form of riverbank, slope or wall construction. There is no need for specialist machinery or skilled labour.

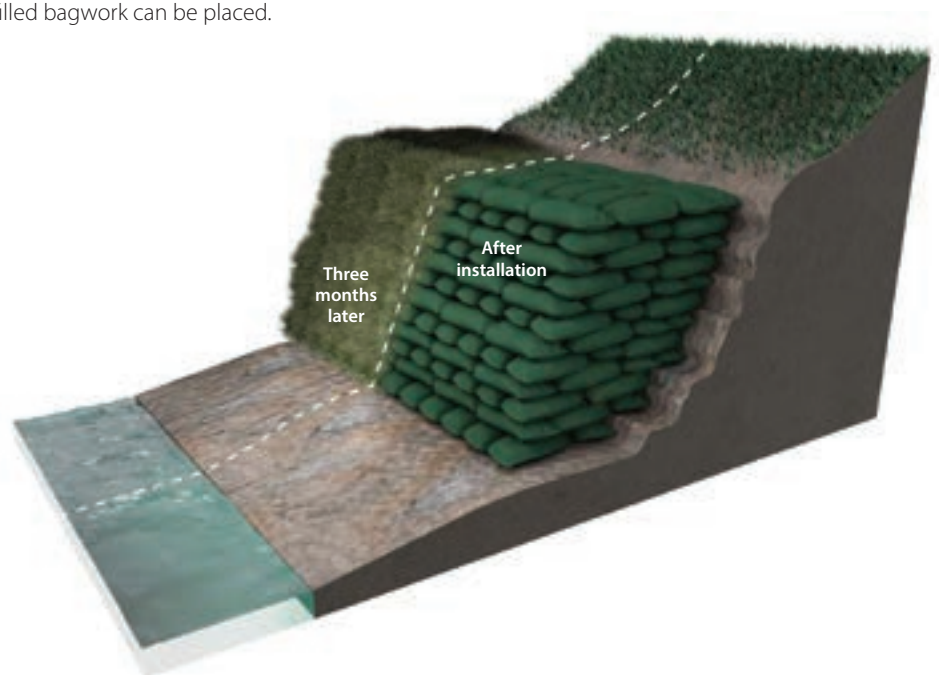
SoluForm bags are delivered prefilled with topsoil ensuring a consistent and quality-controlled product. The bags are held together and prevented from moving using fixing spikes, pins or plates between the rows of bags.

The geotextile bags, coupled with the soil inside the bags allow for the establishment and promotion of vegetation growth, both on and inside the bagwork. This greens up the bagwork to improve its appearance, strengthens the structure and improves both riverbank habitat and biodiversity.

For bagwork underwater, typically our underwater carbon-neutral concrete filled hand placed bagwork is used to form a secure and sound foundation or base onto which the soil filled bagwork can be placed.

### Benefits

- **Easy to use:** The bags can be carried and placed by hand
- **Cost-effective:** An affordable solution for slope, wall or riverbank construction
- **Saves time:** Ready-filled bagwork to eliminate on-site filling
- **Versatile:** Suitable for temporary or long-term installations
- **Quality assurance:** Complies with ISO 9001 and ISO 14001 quality requirements
- **Environmentally-friendly:** Improves the biodiversity of any planted scheme





## New Product

# PlantBox

A clever, simple vertical stackable wall planter system which will enhance any space. Its unique watering system makes looking after plants easy.



### Technical Information

- **Unit dimensions:** 600mm x 200mm x 150mm
- **Fully loaded weight:** 70kg/m<sup>2</sup>
- **Base material:** 100% recycled polypropylene
- **Water reservoir capacity:** 1.8ltr per trough with a water indicator
- **Planting trough capacity:** 120mm deep, holding 3 to 6 plants
- **Water distribution:** Capillary wicking felt allows plant roots to draw up water when needed

### How does it work?

PlantBox is a cost-considerate, UK-manufactured vertical garden solution suitable for installation and positioning on balconies, roof gardens, patios and boundary walls. Pick from a range of three options, the mini (3 troughs), medium (5 troughs) or go large with 10 troughs to create a living wall 1.2 metres across.

PlantBox is easy to put together and requires no daily watering – each trough has a 1.8ltr water reservoir which will last 1 to 2 weeks. The water level indicator will also tell you when the plants are getting thirsty!

PlantBox is a perfect solution to get creative, it can house a huge range of foliage plants, perennials, annual flowering plants, vegetables, herbs and salad crops while providing well-being benefits. The presence of vegetation effectively promotes social interaction, physical exercise, stress reduction and can contribute to mood improvements and attention span.

### Benefits

- **Planet-friendly:** Made in the UK from 100% post-consumer waste plastic
- **Stackable:** Build in any configuration with clips to hold the troughs in place
- **Versatile:** Can be freestanding or wall-mounted, used inside or outside and can transform any space or wall
- **Easy to install:** Lightweight, straightforward to construct and can hold up to 6 plants
- **Intelligent:** Water indicator tells you when to fill up and roots can absorb water through the process of capillary action as required
- **Fits any space:** Opt for the mini (3 troughs), medium (5 troughs) or go large with 10 troughs to create a living wall 1.2 metres across





## Innovations

### Commitment to be BALI Awards Headline Sponsor for the next three years

We have renewed our Headline Sponsorship of the BALI National Landscape Awards for a further three years. We first became the Headline Sponsor back in 2015 and during this time award entries have hit an all-time high and attendance at the ceremony regularly exceeds 1,000, with representation from across the wider landscaping industry.

Wayne Grills, BALI's Chief Executive, commented, "The BALI National Landscape Awards just wouldn't be possible without the support of our sponsors, especially our Headline Sponsor, who work tirelessly to support the team at BALI and our annual efforts to put on the best showcase to promote landscaping excellence."



### Plastic-free Alternative Pledge

Green-tech as a business is an ambassador of the landscape environment, its preservation and planning for the future.

As a company sustainability is a key corporate objective for Green-tech. We strive to employ sustainability throughout our business practices from product conception and manufacture through to delivery.

We are the largest distributor of tree protection products in the UK, and we work in an industry that uses plastic for the protection of trees and shrubs. We are working hard to find viable environmentally-friendly or plastic-free alternatives.

We continue to search and invest in sustainable environmentally-friendly alternatives and are proud to be able to offer several choices to our customers. These include the Tubex Nature Shelter, Rainbow's Treebio Spiral, the Bio-Earth Tree Shelter and the gtGreenGuard.

Additionally, we have joined forces with Tubex to deliver their Tree Shelter Collection and Recycling Programme. It is the first of its kind recycling solution for tree shelters and tubes that have reached their end of life. It is a cost-effective solution that is within reach for everyone.

In 2020 we set out our sustainability statement alongside several environmental and sustainability pledges for delivery over a five-year period. We have already made significant progress.

For full details of our sustainability pledge visit our website page [www.green-tech.co.uk/about-us/sustainability-statement](http://www.green-tech.co.uk/about-us/sustainability-statement)



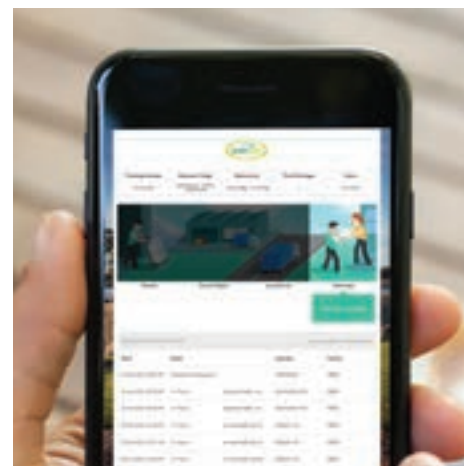
## We've joined the Smart World of dispatch

Shipping is a crucial element in the supply chain and is often the difference between a great or bad customer experience. It's a vital part of our service offering, but something we didn't have full control over.

Not anymore! We now have the SmartFreight platform fully integrated into our operational and delivery processes, providing real-time tracking information of every delivery that leaves the Green-tech warehouses.

Our customers can also utilise the tracking service and monitor the status of their delivery.

Josh Hebden, our Warehouse Manager adds, "SmartFreight offers versatility, transparency, accountability and efficiency. It has transformed the way we work and streamlined our processes. It's been gratefully received by our customers who can now track their deliveries in real time."



## Supplier and Service Provider of the Year

We are proud to have won the Supplier and Service Provider category at the 2021 ProLandscaper Business Awards.

The Awards focus on how well companies run their business. Profitability, sustainability, corporate social responsibility, commitment to the industry and relationships are all judged.

We were deemed by the judges to offer the best value for money, could demonstrate strong customer relationships and staff retention and ultimately have earned ourselves an impeccable reputation.

Green-tech's Marketing Director, Kate Humes, comments, "We are incredibly proud of our reputation within the industry. We work hard to be the best supplier and provide outstanding customer care and to be independently recognised as the winner of the Supplier and Service Provider is fantastic."



# The Sick Children's Trust

We're here, so families can be together

## Green-Tech Charity of the Year 2022: The Sick Children's Trust's Eckersley House

Each year a member of the Green-tech team picks a charity of their choice for the whole company to support. This year is the turn of Chris Swan our Purchasing and Product Development Manager.

Chris has chosen Eckersley House, a remarkable charity that supports families of sick children being treated at Leeds Children's Hospital by giving them somewhere to stay together, close to their seriously ill child's hospital bedside.

The Sick Children's Trust is the charity that gives families one less thing to worry about by giving them a free place to stay, and someone to talk to. They have ten 'homes from home' around the UK, of which Leeds Eckersley House is just one.

The charity's 'Homes from Home' are more than just a place to stay. The house staff and the warm communal areas make sure that there's a friendly ear to listen when families need it.

The Green-tech team aims to raise over £1,000 over the next 12 months through various events and initiatives.

Despite the social restrictions, we are proud to have raised £1092 throughout 2021 for our outgoing charity Henshaws, which helps people living with sight loss and other disabilities.

Chris comments, "My son was unexpectedly diagnosed with neuro complications a couple of years ago. We were introduced to The Sick Children's Trust who offered our family a room to stay in at Eckersley House whilst my son was in the LGI hospital. It really was a home from home and I will be forever grateful to the charity and their team who made that time so much more bearable. It was one less thing to worry about and meant the rest of our family could stay together. I am delighted to be able to help fundraise for a charity that was there for us when we needed it most."



## Testimonials

“ It was a pleasure to work with Green-tech on this innovative major project near Leeds. Working throughout the Corona pandemic has obviously thrown up many challenges but we have worked closely with Green-tech throughout to ensure all product deliveries were made on time and as required. Their product choice is excellent and their service levels and customer care is always outstanding. I would happily recommend them.

**Brambledown Yorkshire**

“ We worked closely with Green-tech as we had to work around challenging delivery restrictions. Being in a city centre and the hospital's own restrictions meant it was imperative that Green-tech made each delivery to a very specific and tight timescale, which they did successfully. They used Moffett equipped artic trailers for easier unloading. The roof top garden looks amazing and has been well received. I would happily recommend Green-tech.

**Swinburne Horticultural Services Ltd**

“ I have been delighted with how smoothly this project has gone. Green-tech has been a great help and delivered everything as specified on the dates requested. Representatives from Green-tech provided advice and provided us with on-site installation training of the ArborRaft System. We are thrilled with the results and the regenerated town centre has been very well received.

**Stevenage Town Council**

“ We have worked with Green-tech for many years now, and they can always be relied on to deliver what we need, where and when we need it. In these times of material shortages when resources are hard to come by, it's good to have a commercial partner who can still step up to the mark.

**Idverde**

“ We have worked with Green-tech for years and have a great relationship, not only for tree pits, but all sorts of landscape supplies. This particular product is a really nice system to work with, and anything that helps reduce plastic in the ground is a good thing.

**Beech Landscape (Developments) Ltd**

“ We were delighted to secure this contract. It has been a rewarding project to work on and we're confident of securing the next phase when this happens. We have worked with Green-tech for many years and they always provide us with excellent advice, prices and service. They are very flexible and always work hard to accommodate our requirements.

**Glendale**

“ With access being an issue on this project, especially with the added difficulty of the extremely wet weather, Green-tech worked with us to overcome this. We were very happy, as always, with the quality of product and the service provided.

**Dobson UK**

“ We know from past experience that Green-tree soils are of a consistent, high quality, which is so important when working on niche projects such as this. Yet again, the service and support from Green-tech was first class.

**Gavin Jones Ltd**

“ We have worked with Green-tech for many years now, and they can always be relied on not only to help out at the front end with specification and cost proposals, but also provide a reliable service when it comes to supply.

**Barton Willmore Landscape Architects**

“ It was an innovative solution which required extensive planning and many trial runs. There were concerns over the quality of the planting material once it had been blown and we had disaster plans, should any machines breakdown. However, testing off-site and a great team behind us, helped us achieve the import of soil in 7 days. The Green-tree substrate was specifically selected for its green credentials, which appealed to both the client and main contractor. We have used this substrate on other roof gardens and knew that it would offer quick establishment which was exactly what this site needed.

**Palmer Landscapes**



# Are you prepared for the planting season?

Green-tech is the largest supplier of tree planting materials in the UK and we're here to help.

- Over 25 years' forestry industry experience
- The largest official distributor of Tubex shelters
- Millions of tree shelters and guards in stock and ready for dispatch
- Extensive range of biodegradable tree planting products

## We also offer:

- Fast turnaround from order to delivery
- A large choice of shelters, guards, spirals, stakes, canes and sundries
- Flexible delivery options including next day, timed and remote deliveries and moffett offload
- Competitive pricing
- Excellent customer care

Secure your order today –  
call Green-tech on **01423 332100**  
or email **sales@green-tech.co.uk**

**www.green-tech.co.uk**

@greentechltd @greentechuk green-tech-ltd



Green-tech is the leading supplier of professional landscaping materials and consumables to the UK landscape, forestry and construction industries.

## Get in touch...

Our experienced and dedicated sales team is on hand Monday to Friday 8am – 5.30pm

T: 01423 332 100

E: sales@green-tech.co.uk

## Online...

Find over 16,000 landscaping products online at:

[www.green-tech.co.uk](http://www.green-tech.co.uk)

[www.gtspecifier.co.uk](http://www.gtspecifier.co.uk)

[www.green-tree.co.uk](http://www.green-tree.co.uk)

[www.johnchamberswildflowers.co.uk](http://www.johnchamberswildflowers.co.uk)

[www.flexiblelining.co.uk](http://www.flexiblelining.co.uk)

[www.terramdirect.co.uk](http://www.terramdirect.co.uk)

Or join us at:

 @greentechLtd

 @greentechuk

 green-tech-ltd



**Green-tech**, Rabbit Hill Business Park,  
Great North Road, Arkendale, Knaresborough, HG5 0FF  
T: 01423 332 100 E: sales@green-tech.co.uk  
[www.green-tech.co.uk](http://www.green-tech.co.uk)

