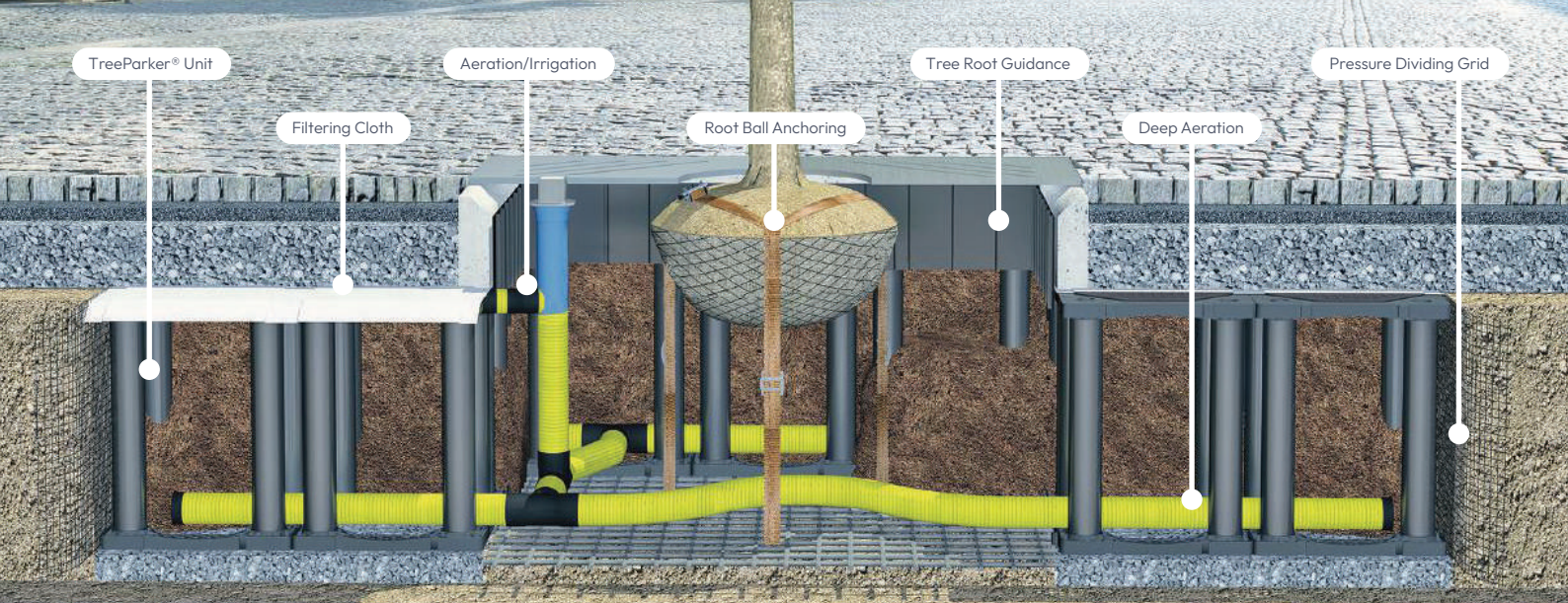




# Introducing **TreeParker®** – Urban Tree Pit Support System



# TreeParker® - A modular support and water management system

TreeParker® is a versatile urban tree planting cell system, manufactured by Treebuilders and distributed by Green-tech in the UK and Ireland. TreeParker® was developed in partnership with arboriculturists, landscape architects, and civil engineers, through extensive urban tree planting projects and trials.

## Loading capacity up to 56 tonnes/m<sup>2</sup> (550 kpa)

Able to support hard paving for vehicular or pedestrian applications.

## Integration with existing and new service lines

Using pillars rather than side walls means service lines are easily worked around.

## No need to stack units

TreeParker® is available in the following heights: 400, 600, 800, 1000, 1200 and 1500mm. This adaptability gives you more control over tree pit depth and rooting volume.

## Combining green and blue infrastructure for storm water management

The system can be used to capture and filtrate surface water, treating and attenuating at source.

## Suitable for all sizes of trees

From a 3x3 tree pit to a 100m<sup>2</sup> shared trench, TreeParker® gives all tree species and sizes the best chance of successful establishment.

## Simplicity is its strength

Simplicity characterises the system. Through a simple, robust design, the TreeParker® system can be installed in any tree planting space, even staggered or circular, making it easy to customise the tree pit design to your needs.

Each independent unit has sufficient load-bearing capacity, so they do not necessarily need to be linked. Just shift the units into position with a maximum spacing of 75mm between. Various heights are available, so you can match the units to your exact rooting area. TreeParker® fits in with you, not the other way round.



**Treeparker®**  
STRUCTURAL SOIL CELL SYSTEM

### A smart combination of Green, Grey and Blue

The challenges of urban tree planting are well documented, from traffic loading to pavement lifting and integrating essential utilities.



Allows use of high-quality, friable topsoil, whilst a 95% void ratio maximises rooting volume.



15 tonne single axle load (up to 56t/m<sup>2</sup>). Non-obstructive to utilities. Supports paving above.



Stormwater management and natural filtration.

## TreeParker<sup>®</sup> offers the right solution for **any challenge** within the city



### Optimum rooting space

The rigid, yet open structure of TreeParker<sup>®</sup> ensures that 95% of the tree pit area is given over to the soil. This allows uninterrupted root establishment, with no danger of soil compaction or upward root growth.



### Tested for the heaviest traffic loads

TreeParker<sup>®</sup> consists of modular units that are strong enough to support the heaviest wagons. The load is transferred from the surface paving to the formation ground via the TreeParker<sup>®</sup> frames and reinforced posts, avoiding any pressure on the soil within the tree pit.



### Integrated water management

Using TreeParker<sup>®</sup> in the tree pit provides numerous SuDS benefits, from water storage to filtration and water reuse. Providing a circular approach to water management.



### Stress-free integration with new and existing utilities

TreeParker<sup>®</sup> is designed to work under the urban environment. The simple, open construction enables contractors to straddle over existing service lines and pipes, with no integrated side walls to get in the way.

# Installation of the **TreeParker**<sup>®</sup> system

Installation is incredibly quick and easy. There are many ways of setting up your layout; the units can be connected directly, stand-alone, staggered, or even curved. The buildup can be constructed immediately after the system has been installed.



1

The first stage is to ensure the base of your tree pit is level and consolidated to your engineer's specification. Getting this right is crucial to the success of the tree pit.



2

The base frames are installed according to the layout plan, leaving 30cm working room around the edge of the units. The units can be installed with a spacing of up to 75mm; this means that curved installations and non-standard dimensions are possible. Dimensions of a single unit are 605 x 605mm.



3

After all the base frames are in position, the support posts and top frames are installed, straddling any service lines as required. The posts are available in six height options and can also be manually adjusted as work is in progress, to overcome any unexpected underground obstacles.



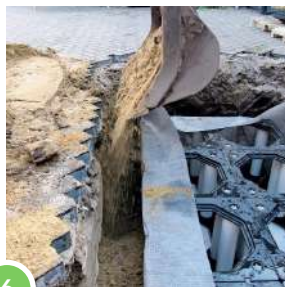
4

After all the units have been installed the system is enclosed by the reinforced separation TP Combigrid. This can be backed by an additional root barrier if required.



5

The system is now ready to be filled. Backfill the surrounding trench then the inside of the tree pit, alternately in 200-300mm layers. Maximum compaction for the backfill is important, but the soil within the system is only slightly compacted. Manually consolidate the soil inside the system by foot, ensuring maximum soil volume for the tree.



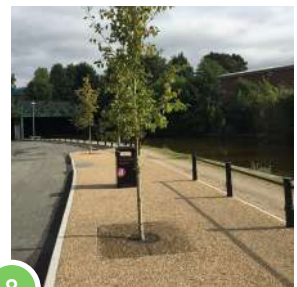
6

Do not completely fill the system—leave an aeration layer directly beneath the top frame of 50-100mm. This has three benefits—air is brought much closer to the soil— it will air-prune any stray upward roots— and it can also act as an entry point for surface water.



7

Finally, seal the system with the aeration decks and cover with the final separation geo-textile to prevent any of the buildup dropping into the tree pit. These decks can also be used as inspection hatches. The system is ideal for use underneath a permeable top surface.



8

Before the pavement is finished, construct the tree pit curbing. Any type of shape or finish to engineers' specification can be used. The tree pit can also be left open for optimal aeration and irrigation.

Green-tech Specifier is the official UK distributor of the **TreeParker**<sup>®</sup> system. Contact our team today for project assistance.

Tel: 01423 332 100 | Email: [info@gtspecifier.co.uk](mailto:info@gtspecifier.co.uk)

[www.gtspecifier.co.uk](http://www.gtspecifier.co.uk)

Green-tech Specifier, Great North Road, Arkendale, Knaresborough HG5 0FF

**green-tech**  
SPECIFIER