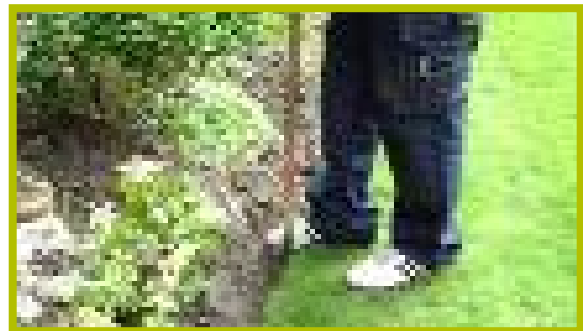




# Rite Edge Installation Guide

## Step 1:

Dig a small trench around 5cm wide and 10cm deep (**see picture 1**) in the exact position you require your new edge.



1.

## Step 2:

Form the Rite-Edge to the shape and design you require (**see picture 2**) including the 5cm (approx) overlap joints. For sharp angled bends use a piece of 4" x 2" timber or the end of a work bench (**see picture 3**) holding the Rite-Edge down on the flat surface and swiftly pushing down on the overhanging Rite-Edge until the desired angled bend is achieved. This can now be placed into the trench you formed for the edging, making sure the stake pockets are located towards the lawn side (**see diagram on page 2**)



2.

## Step 3:

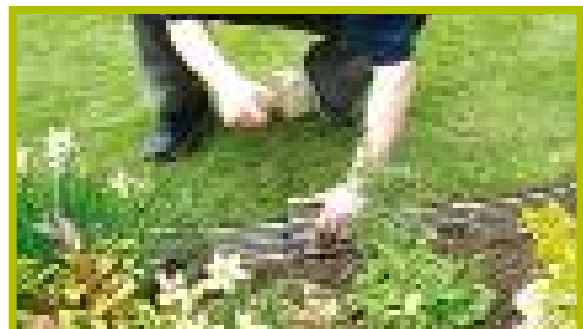
Check the exact height for the top of the Rite-Edge which should be just above true ground level (approx 2-6mm) but beneath the required cut grass level. (**see diagram on page 2**)



3.

## Step 4

If you are now happy with the shape and height, add the fixing stakes and drive fully home. (**see picture 4**)



4.

## Step 5

A simple back filling on the sides of your --Rite-Edge completes your Rite-Edge installation.

Green-tech endeavour to ensure that the information given on this technical data sheet is accurate, but accept no liability for its use or its suitability for particular application.

Rabbit Hill Business Park, Great North Road, Arkendale, Knaresborough HG5 0FF

T: 01423 332100 E: sales@green-tech.co.uk W: www.green-tech.co.uk Facebook: @greentechuk Twitter: @greentechltd



**Helpful Tips:**

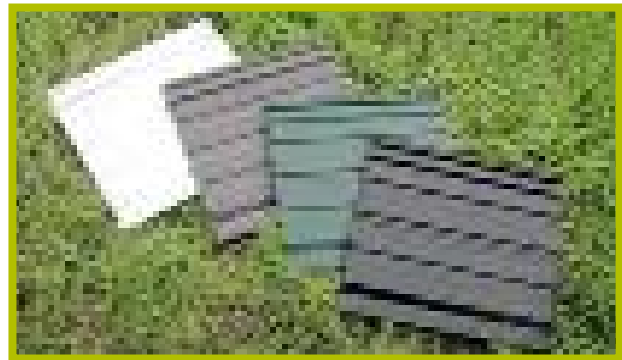
Joining is achieved using the unique telescopic design by simply sliding one piece inside the other. Recommended approx 5cm overlap on each joint. **(see picture 5)** For flush fit joints along entire length a small piece can be used behind each joint. **(see picture 6, 7 and 8)** Packs of flush joining pieces can be purchased separately. Avoid forming curves and bends at stake locations as it will be more difficult to pass stakes through the stake pocket. When making cuts use a sharp scribe for saw to follow.

**Tools Needed:**

Spade, Hacksaw, Scribe, Hammer/Mallet, Gloves, Eye Protection



5.



6.



7.



8.

Green-tech endeavour to ensure that the information given on this technical data sheet is accurate, but accept no liability for its use or its suitability for particular application.

Rabbit Hill Business Park, Great North Road, Arkendale, Knaresborough HG5 0FF

T: 01423 332100 E: sales@green-tech.co.uk W: www.green-tech.co.uk Facebook: @greentechuk Twitter: @greentechltd