

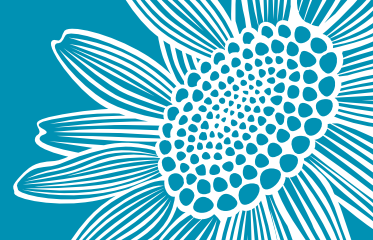
Green Roof Wildflower Mixture

Green Roof Wildflower Seed Mix developed by the John Chambers team, offering a British Native Wildflower seed mix, specifically developed for installation on green roof environments.

Includes up to 30 species of varying size but mainly low-medium height native wildflower and herbs suited to growing in low depth, low fertility substrates. Ideal for creating a new green roof system (species subject to change). The wildflower green roof mix attracts a high diversity of wildlife including native pollinating species.



Figure 1 - Early growth of the John Chambers Green Roof Mix



Ribwort Plantain - <i>Plantago lanceolata</i>	Scabious; Field - <i>Knautia arvensis</i>
Common Knapweed - <i>Centaurea nigra</i>	Selfheal - <i>Prunella vulgaris</i>
Agrimony - <i>Agrimonia eupatoria</i>	St John's Wort; Perforate Or Common - <i>Hypericum perforatum</i>
Bedstraw; Lady's - <i>Galium verum</i>	Toadflax; Common - <i>Linaria vulgaris</i>
Bird's-foot-trefoil; Common - <i>Lotus corniculatus</i>	Vetch; Kidney - <i>Anthyllis vulneraria</i>
Burnet; Salad - <i>Sanguisorba poterium</i>	Viper's-bugloss - <i>Echium vulgare</i>
Buttercup; Bulbous - <i>Ranunculus bulbosus</i>	Buttercup; Meadow - <i>Ranunculus acris</i>
Campion; Bladder - <i>Silene vulgaris</i>	Campion; White - <i>Silene latifolia</i>
Cowslip - <i>Primula veris</i>	Corncockle - <i>Agrostemma githago</i>
Daisy; Oxeye - <i>Leucanthemum vulgare</i>	Cornflower - <i>Centaurea cyanus</i>
Hawkbit; Autumn - <i>Leontodon autumnalis</i>	Chamomile; Corn - <i>Anthemis arvensis</i>
Hawkbit; Rough - <i>Leontodon hispidus</i>	Forget-me-not; Field - <i>Myosotis arvensis</i>
Mallow; Musk - <i>Malva moschata</i>	Marigold; Corn - <i>Glebionis segetum</i>
Marjoram; Wild - <i>Origanum vulgare</i>	Chamomile; Scentless - <i>Tripleurospermum inodorum</i>
Mignonette; Wild - <i>Reseda lutea</i>	Pansy; Field - <i>Viola arvensis</i>
Plantain; Hoary - <i>Plantago media</i>	Poppy; Field or Common - <i>Papaver rhoeas</i>

Table 1 - Due to availability, species and proportions may vary at time of order. This is at the discretion of John Chambers Wildflower Seed.

The John Chambers Green Roof mixture contains no grasses and is 100% wildflower seed. Sow the wildflower mixture on a suitable substrate, ensuring it is a level fine tilth. Sow either in Spring or Autumn at a rate of 3g/sqm.

Growing medium:

Choosing the correct medium will depend on the type of roof being created. The John Chambers green roof mixture can be sown on numerous types of substrate, although an intensive substrate may offer slightly better germination, due to increased levels of fertility. Once the growing medium is levelled and raked to a fine tilth, the seed can be sown.

Intensive substrate:

A blend of lightweight aggregate and award-winning Green-tree Topsoil. Intensive roofs are deeper with a media thickness range from 200mm - 1000mm deep. This soil is ideal for containerised planting.

Extensive substrate:

Lightweight in texture, this extensive substrate is great for quick plant establishment and shallow green roof projects (60mm - 200mm deep). Ideal for wildflower matting or seeding to create a biodiverse green roof.

Establishment:

After sowing seeds, ensure a light watering is given. If the seed is to be sown in the Springtime, occasional watering through the summer may be required to ensure the seeds do not burn and seedlings have enough access to water. Some seeds (especially perennial species) will require frost/thaw action in order to germinate, therefore flowering may be more successful in the second year.

Maintenance:

Allow the whole sward to grow unchecked from March onwards and cut back the whole sward year-on-year after seed heads have flowered and new seeds dispersed (late Autumn). Remove clippings after cutting back. Watering should be done ideally in the morning or evening. Once seedlings are established, watering should be reduced.